



2001-2009

Motorcycle - Scooter - ATV - MUV

**V.I.N.
Location Guide**

**Includes Color Label Locations
Includes Frame Number Locations**

Introduction

The location of the V.I.N. (Vehicle Identification Number) for every 2001-2009 Honda motorcycle, scooter, ATV, and MUV is shown inside. Each entry lists the production years for the model.

Street-Legal Motorcycles & Scooters

- The V.I.N. appears on the Safety Certification Label (various locations on different models).
- On Street-Legal Motorcycles: The V.I.N. is also stamped on the right side of the steering head. On Scooters: The V.I.N. is also stamped on the frame. (Before 2007, the stamped number was identified as the frame number.)

Off-Road-Only Motorcycles & ATVs

These models do not have a Safety Certification Label.

- The V.I.N. is stamped on the left or right side of the steering head. (Before 2007, this stamped number was identified as the frame number.)

A description and an illustration of each number location is included on the pages that follow.

The information is categorized by type of vehicle, and then listed in size order by cc.

Use the thumb tabs to the right to locate the correct section, then search by size.

You will find **Color Label Locations** at the rear of this guide.

To check locations for earlier models, refer to the *1990-2000 V.I.N. Location Guide* (reorder no. S0567).

STREET

DUAL SPORT

OFF ROAD

ATV

MUV

SCOOTER

V.I.N. Location Guide

CONSTRUCTION OF VEHICLE IDENTIFICATION NUMBER (V.I.N.)

W.M.I. World manufacturer identifier
 V.D.S. Vehicle descriptor section
 V.I.S. Vehicle indicators

W.M.I. V.D.S. V.I.S.
 JH2 RC040 * B M 200001

Sequential Production number

Plant Representation

- A...OHIO factory in U.S.A.
- B...AALST factory in BELGIUM
- C...SAITAMA factory IN JAPAN
- D...GUADALAJARA factory in MEX.
- E...MONTESSA factory in SPAIN
- F...ATESSA factory in ITALY
- K...KUMAMOTO factory in JAPAN
- M...HAMAMATSU factory in JAPAN
- R...MANAUS factory in BRAZIL
- S...SUZUKA factory in JAPAN
- 4...SOUTH CAROLINA factory in U.S.A.

Model Year

- | | | | |
|----------|----------|----------|----------|
| L...1990 | M...1991 | N...1992 | |
| P...1993 | R...1994 | S...1995 | T...1996 |
| V...1997 | W...1998 | X...1999 | Y...2000 |
| 1...2001 | 2...2002 | 3...2003 | 4...2004 |
| 5...2005 | 6...2006 | 7...2007 | 8...2008 |
| 9...2009 | | | |

Check digit

This code is used to detect errors in the V.I.N. and consists of a single-digit number (0-9) or a letter "X". It has no direct bearing upon the V.D.S and V.I.S.

Vehicle description code

(EXAMPLE) RC040... CB750F NC030... CB400T
 Refer to: SERIAL NUMBERS

Make and Type of vehicle

- JH2.....HONDA, Motorcycle & ATV (Manufactured in JAPAN)
- 1HFHONDA, Motorcycle & ATV (Manufactured in U.S.A.)
- YC1HONDA, Motorcycle (Manufactured in BELGIUM)
- 9C2.....HONDA, Motorcycle (Manufactured in BRAZIL)
- 3H1.....HONDA, Motorcycle (Manufactured in MEXICO)
- VTM.....HONDA, Motorcycle (Manufactured in SPAIN)
- ZDC.....HONDA, Motorcycle (Manufactured in ITALY)
- JH3.....HONDA, All Terrain Vehicle (Manufactured in JAPAN)
- 478HONDA, All Terrain Vehicle (Manufactured in U.S.A.)

Any change or modification of parts is directly related to the V.D.S. and V.I.S.

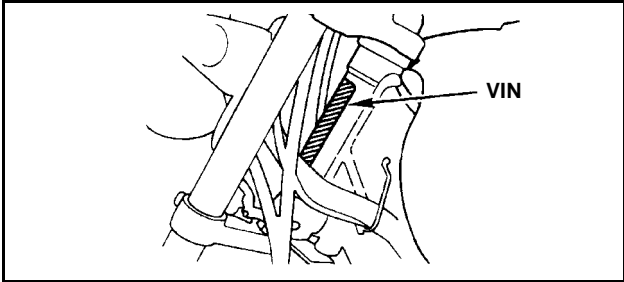
A V.I.S. number will appear in the "Serial No." column of the Parts Catalog if a part is changed or modified.

NOTE:

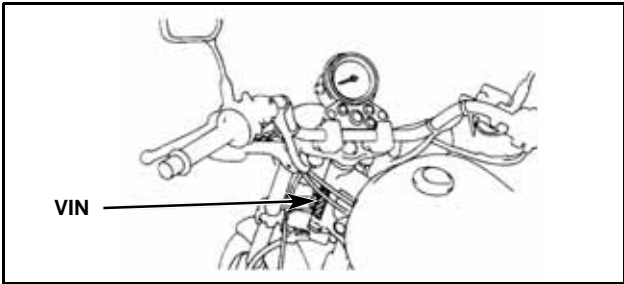
This example is generic and applies to 1981 and newer vehicles. 1980 models and prior are referred to as "FRAME NUMBERS" and the construction is designed by using the model description code followed by a sequential number.

Street Motorcycles

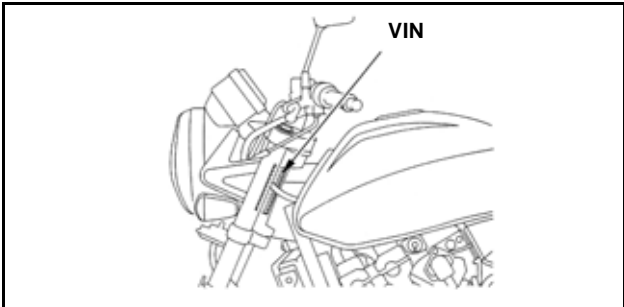
CB250 Nighthawk: '91 - '97, '99 - '08
LEFT side of the steering head on Safety Certification Label.



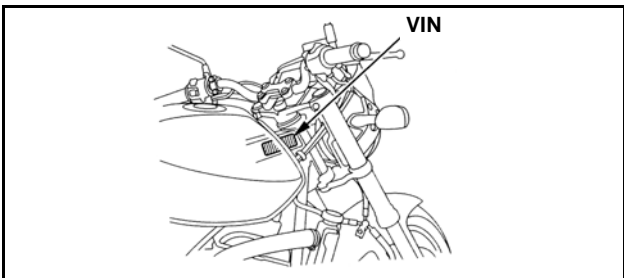
CMX250C Rebel: '96 - '97, '00 - '09
LEFT side of the steering head on Safety Certification Label.



CB600F: '04
LEFT side of the steering head on Safety Certification Label.



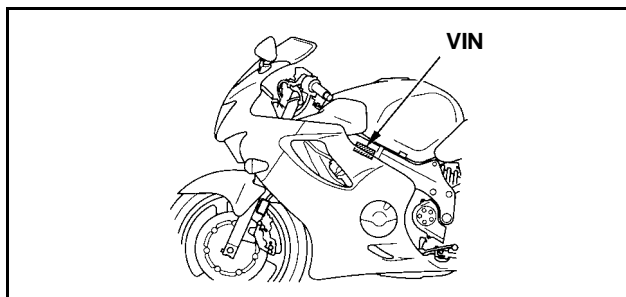
CB600F: '06
RIGHT side of the frame on Safety Certification Label.



Street Motorcycles

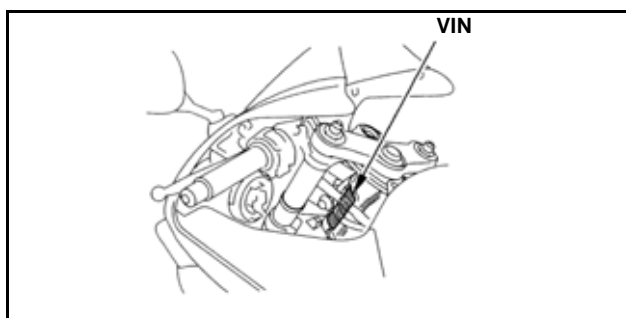
CBR600F4i: '99 - '06

LEFT side of the frame on Safety Certification Label.



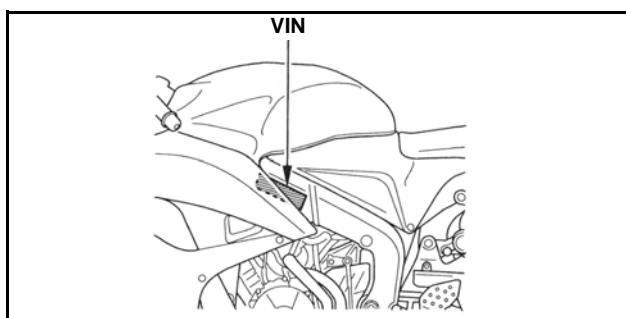
CBR600RR: '03 - '06

LEFT side of the steering head on Safety Certification Label.



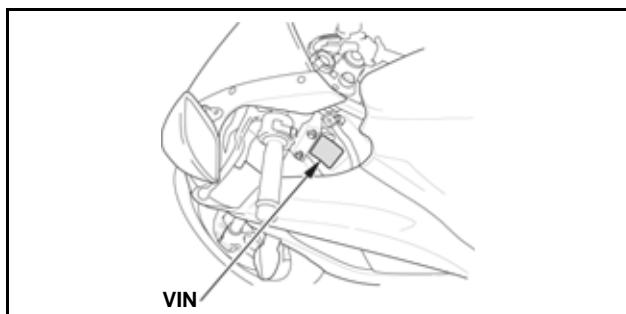
CBR600RR: '07 - '08

LEFT side of the frame on Safety Certification Label.



CBR600RR: '09

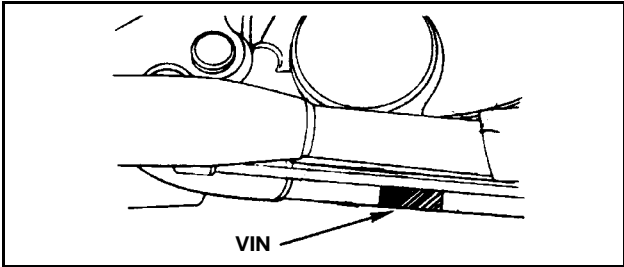
LEFT side of the frame on Safety Certification Label.



Street Motorcycles

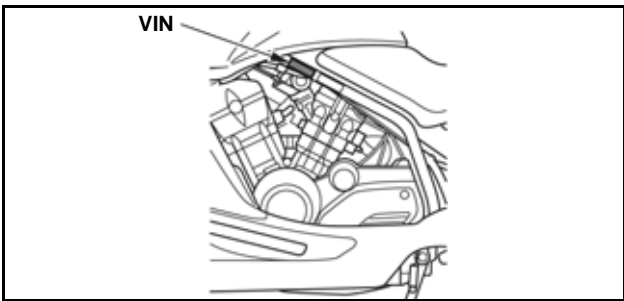
VT600C/CD Shadow VLX: '90 - '06

RIGHT side of the frame below exhaust pipe on Safety Certification Label.



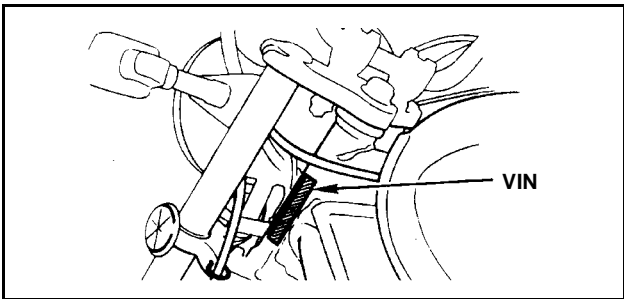
NSA700A DN-01: '09

LEFT side of the frame on Safety Certification Label.



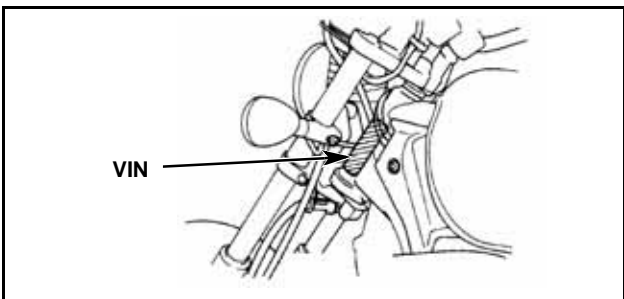
CB750 Nighthawk: '91 - '93, '95 - '03

LEFT side of the steering head on Safety Certification Label.



VF750C: '97 - '03

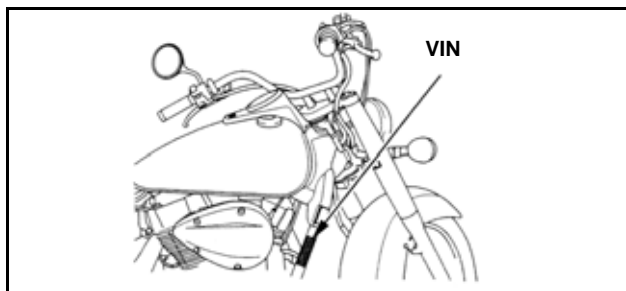
LEFT side of the steering head on Safety Certification Label.



Street Motorcycles

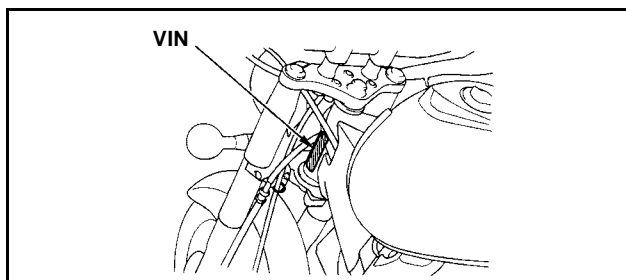
VT750C Shadow Aero: '04 - '09

RIGHT side of the frame on Safety Certification Label.



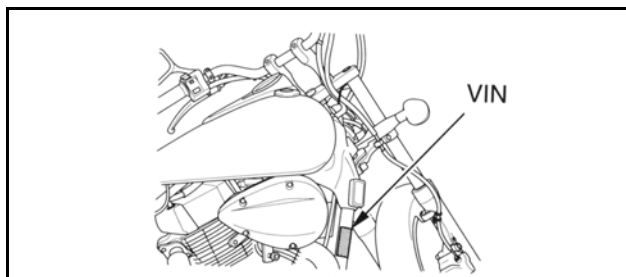
VT750CD Shadow Deluxe: '01 - '03 (American Classic Edition)

LEFT side of the steering head on Safety Certification Label.



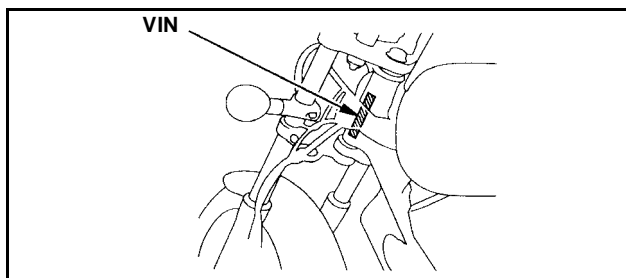
VT750C2 Shadow Spirit: '07 - '09

RIGHT side of the frame on Safety Certification Label.



VT750DC Shadow Spirit: '01 - '03, '05 - '06

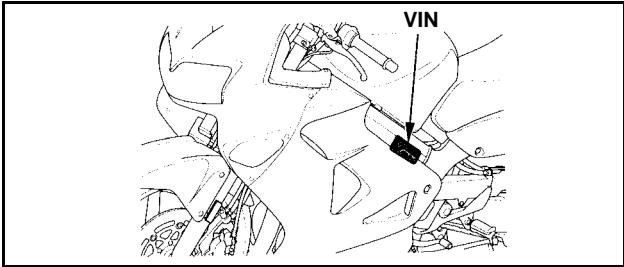
LEFT side of the steering head on Safety Certification Label.



Street Motorcycles

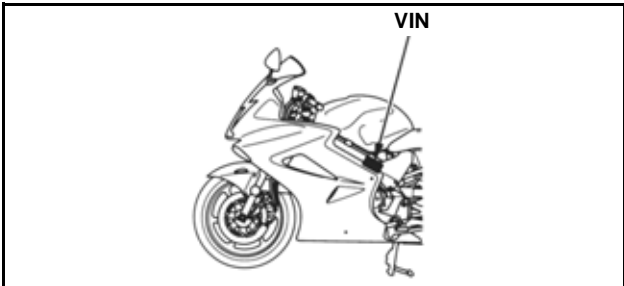
VFR800FI: '98 - '01

LEFT side of the frame on Safety Certification Label.



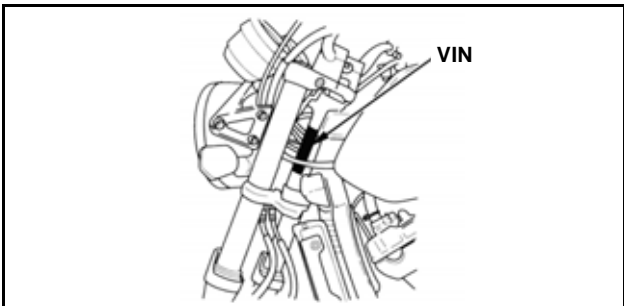
VFR800/A Interceptor: '02 - '09

LEFT side of the frame on Safety Certification Label.



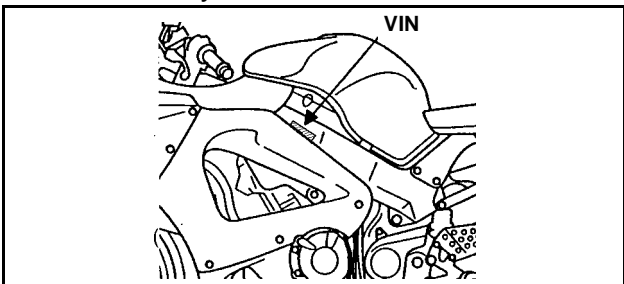
CB900F 919: '02 - '07

LEFT side of the steering head on Safety Certification Label.



CBR929RR: '00 - '01

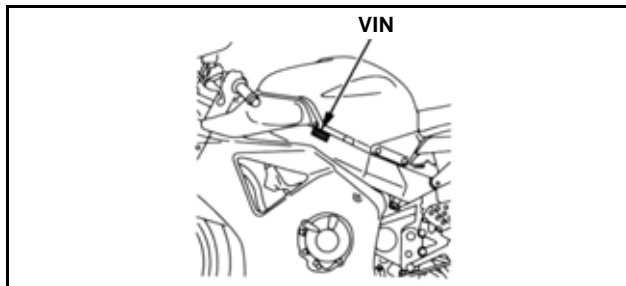
LEFT side of the frame near the steering head on Safety Certification Label.



Street Motorcycles

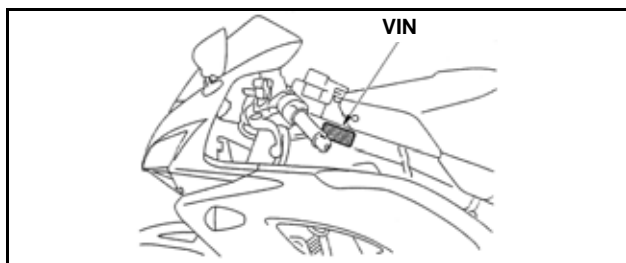
CBR954RR: '02 - '03

LEFT side of the frame on Safety Certification Label.



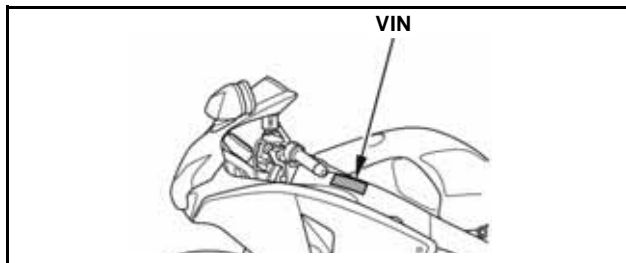
CBR1000RR: '04 - '07

LEFT side of the frame on Safety Certification Label.



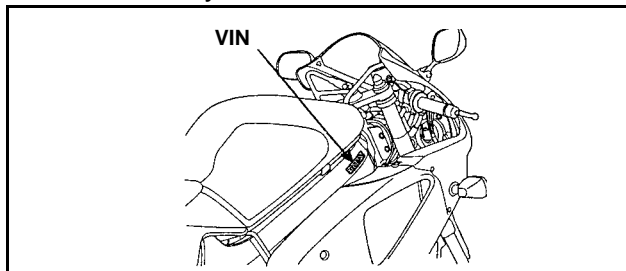
CBR1000RR: '08 - '09

LEFT side of the frame on Safety Certification Label.



RVT1000R (RC51): '00 - '06

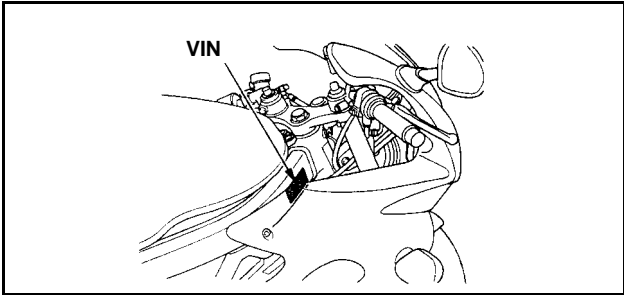
RIGHT side of the frame near the steering head on Safety Certification Label.



Street Motorcycles

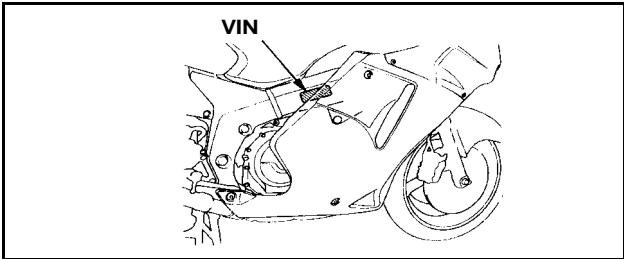
VTR1000F: '98 - '05

RIGHT side of the frame near the steering head on Safety Certification Label.



CBR1100XX: '97 - '03

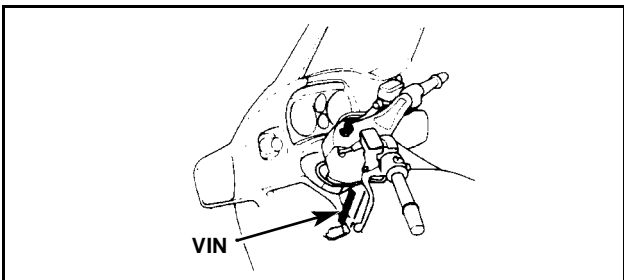
RIGHT side of the frame on Safety Certification Label.



ST1100/A: '91 - '02

ST1100P: '04

LEFT side of the steering head on Safety Certification Label.



Street Motorcycles

VT1100C Shadow: '88 - '03

VT1100C Shadow Spirit: '04 - '07

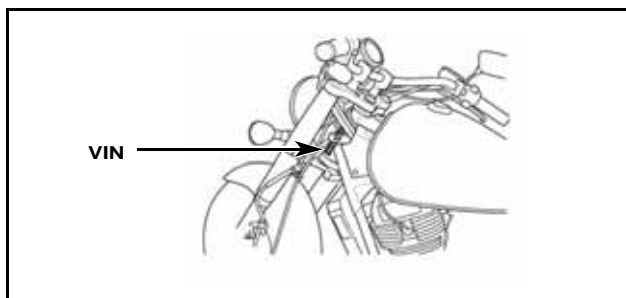
VT1100C2 Shadow A.C.E.: '95 - '03

VT1100C2 Shadow Sabre: '04 - '07

VT1100C3 Shadow Aero: '99 - '03

VT1100T Shadow A.C.E. Tourer: '01

LEFT side of the steering head on Safety Certification Label.

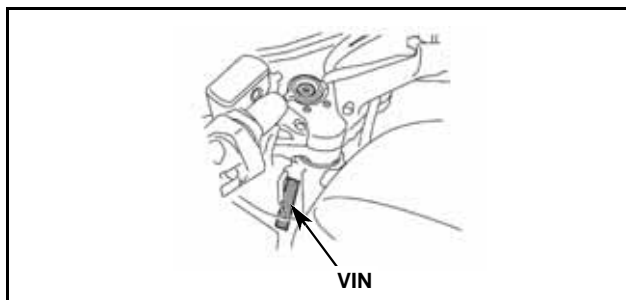


ST1300/A: '03 - '09

ST1300P: '05

ST1300PA: '06 - '07

LEFT side of the steering head on Safety Certification Label.



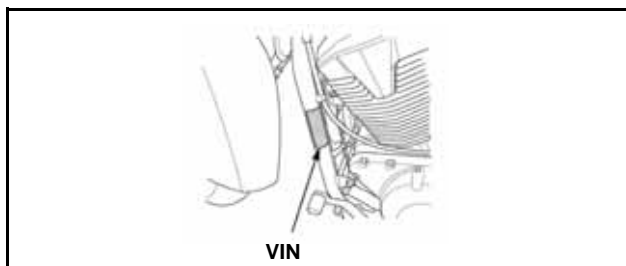
VTX1300C: '04 - '09

VTX1300S: '03 - '07

VTX1300R: '05 - '09

VTX1300T: '08 - '09

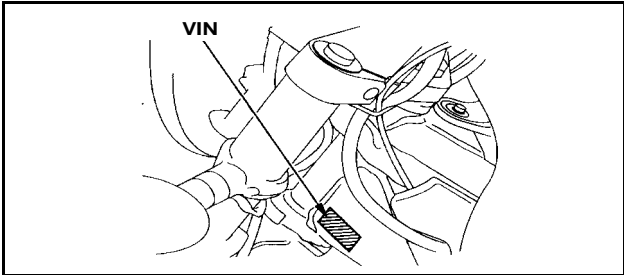
LEFT side of the frame down tube on Safety Certification Label.



Street Motorcycles

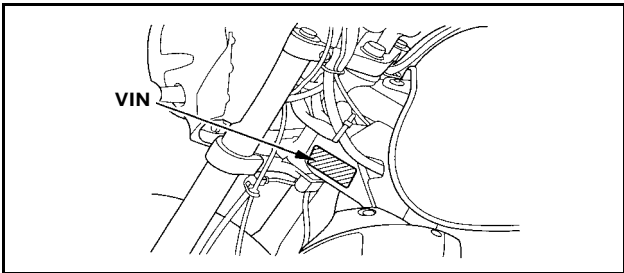
GL1500CD Valkyrie: '01 - '03

LEFT side of the frame near the steering head on Safety Certification Label.



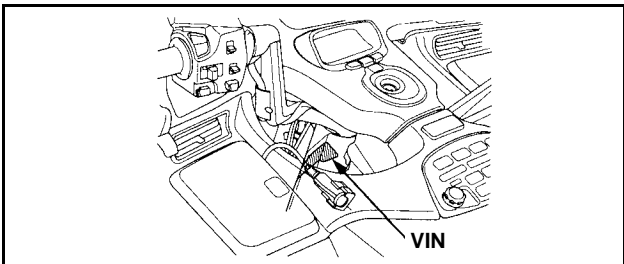
GL1500CF Valkyrie Interstate: '99 - '01

LEFT side of the frame near the steering head on Safety Certification Label.



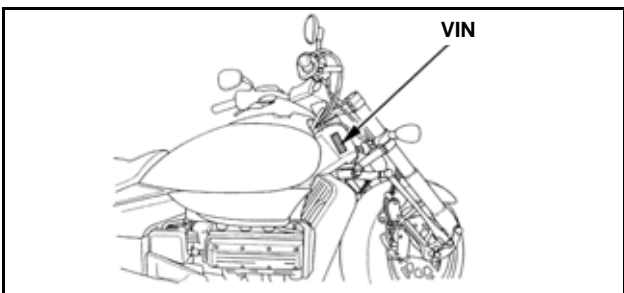
GL1800 Gold Wing: '01 - '09

LEFT side of the steering head on Safety Certification Label.



NRX1800: '04 - '05

RIGHT side of the steering head on Safety Certification Label.



V.I.N. Location Guide

Street Motorcycles

VTX1800C/R: '02 - '07

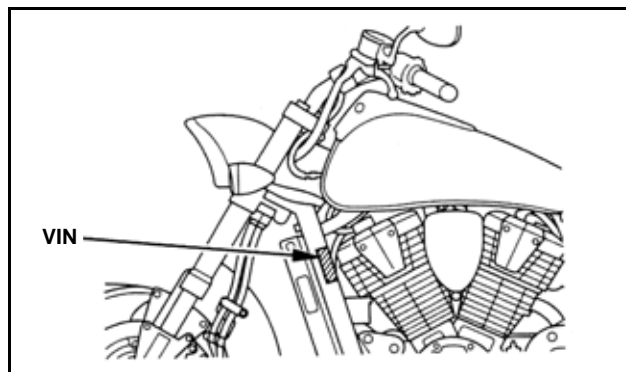
VTX1800F: '05 - '08

VTX1800N: '04 - '08

VTX1800S: '02 - '06

VTX1800T: '07 - '08

LEFT side of the down tube on Safety Certification Label.



Dual-Sport Motorcycles

XR650L: '94 - '09

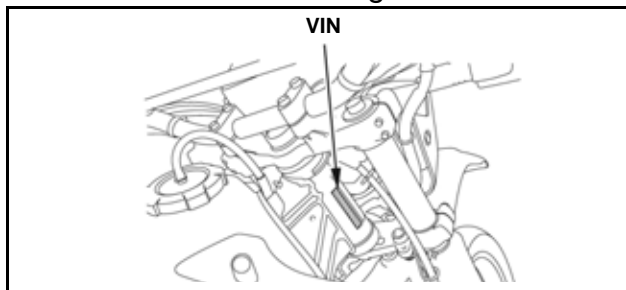
RIGHT side of the steering head on Safety Certification Label.



CRF230L: '08 - '09

CRF230M: '09

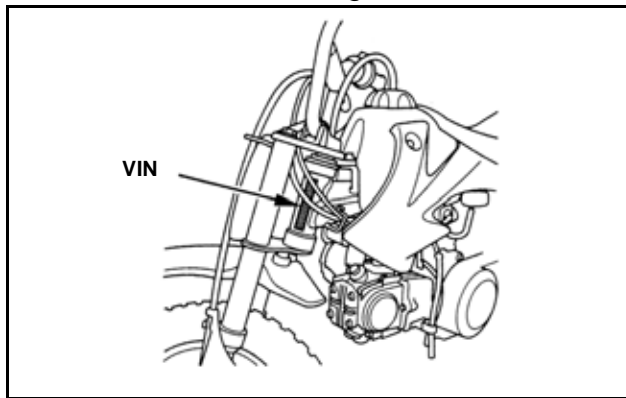
RIGHT side of the steering head.



Off-Road Motorcycles

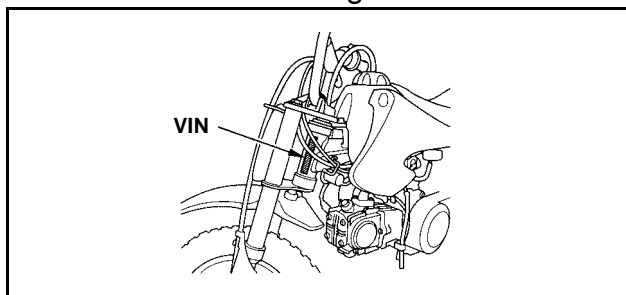
CRF50F: '04 - '09

LEFT side of the steering head.



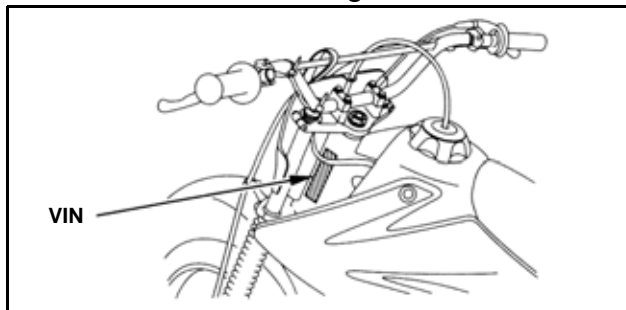
XR50R: '00 - '03

LEFT side of the steering head.



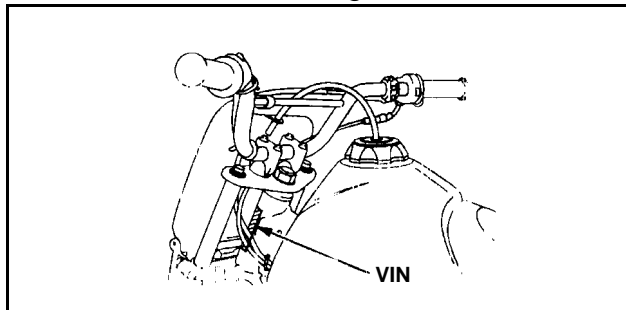
CRF70F: '04 - '09

LEFT side of the steering head.



XR70R: '97 - '03

LEFT side of the steering head.



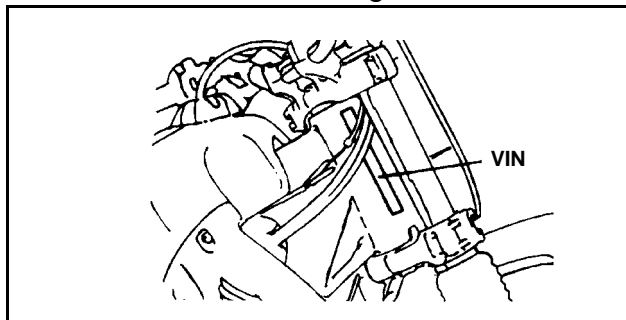
OFF
ROAD

Off-Road Motorcycles

CR80R: '90 - '02

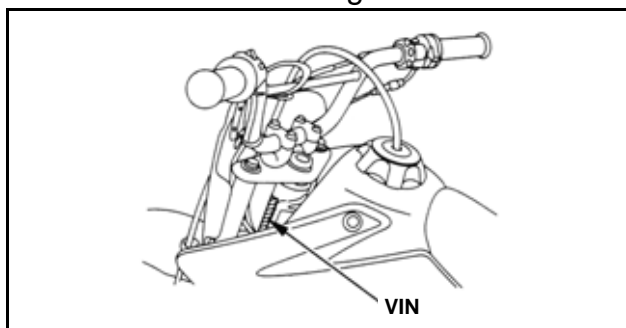
CR80RB: '96 - '02

RIGHT side of the steering head.



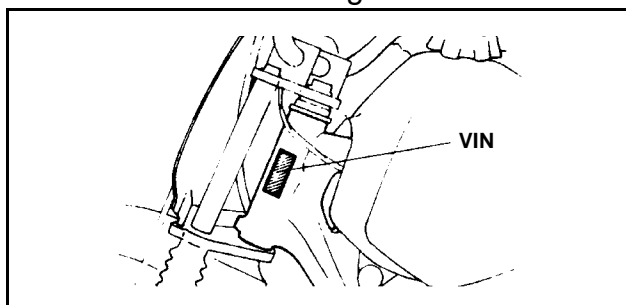
CRF80F: '04 - '09

LEFT side of the steering head.



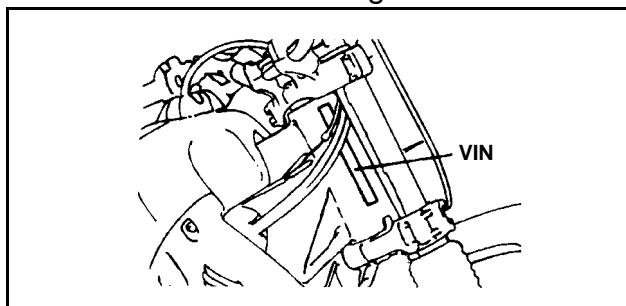
XR80R: '90 - '03

LEFT side of the steering head.



CR85R/RB: '03 - '07

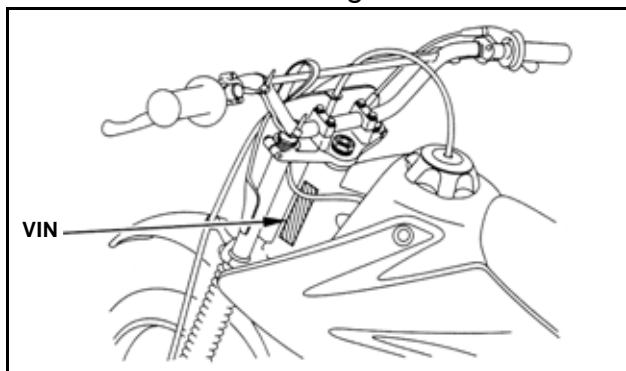
RIGHT side of the steering head.



Off-Road Motorcycles

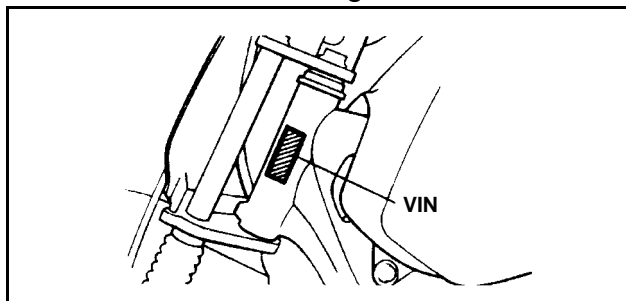
CRF100F: '04 - '09

LEFT side of the steering head.



XR100R: '90 - '03

LEFT side of the steering head.



OFF
ROAD

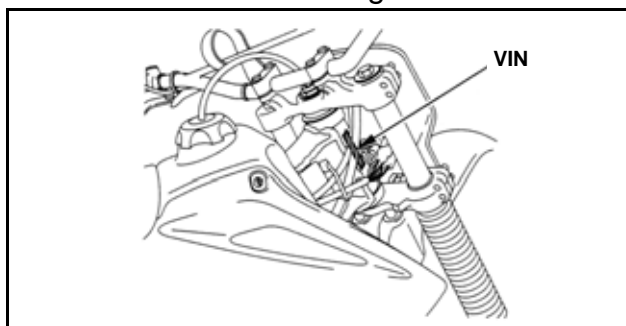
CR125R: '90 - '07

RIGHT side of the steering head.



CRF150F: '03 - '09

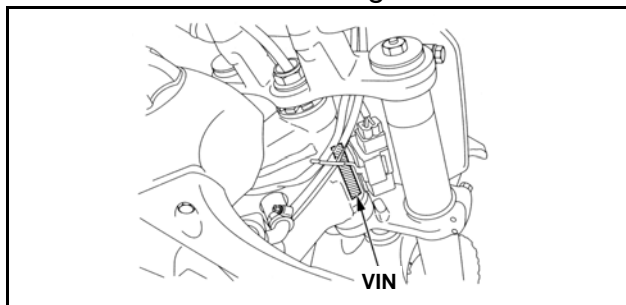
RIGHT side of the steering head.



Off-Road Motorcycles

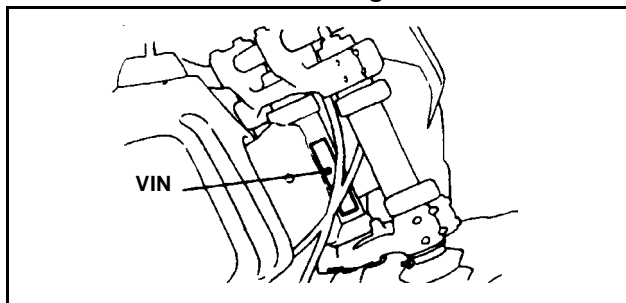
CRF150R/RB: '07 - '09

RIGHT side of the steering head.



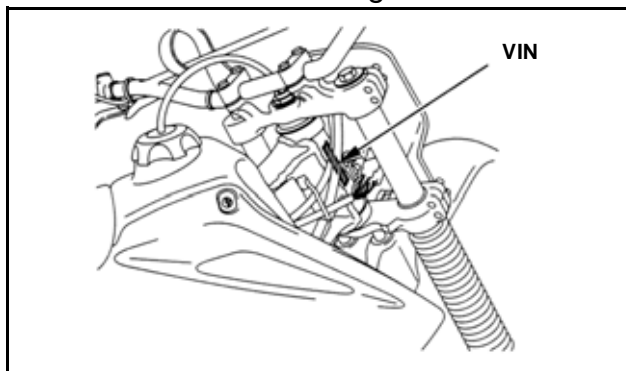
XR200R: '90 - '02

RIGHT side of the steering head.



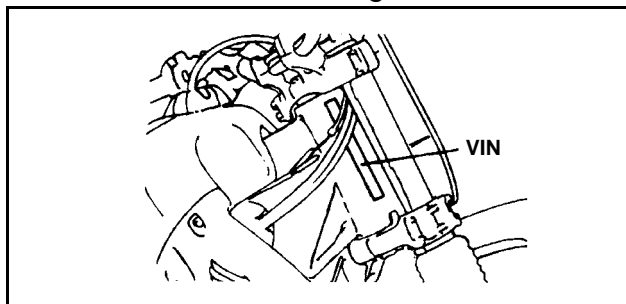
CRF230F: '03 - '09

RIGHT side of the steering head.



CR250R: '90 - '07

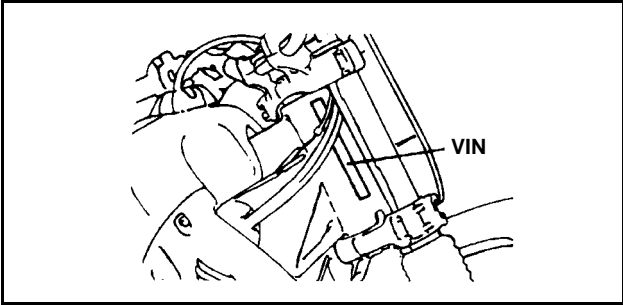
RIGHT side of the steering head.



Off-Road Motorcycles

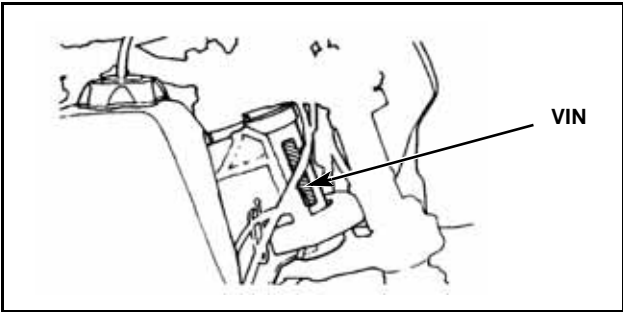
CRF250R/X: '04 - '09

RIGHT side of the steering head.



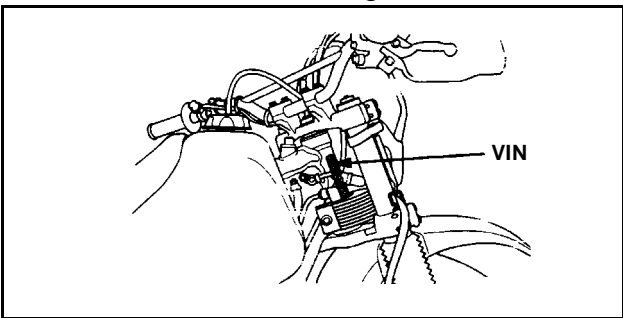
XR250R: '91 - '04

RIGHT side of the steering head.



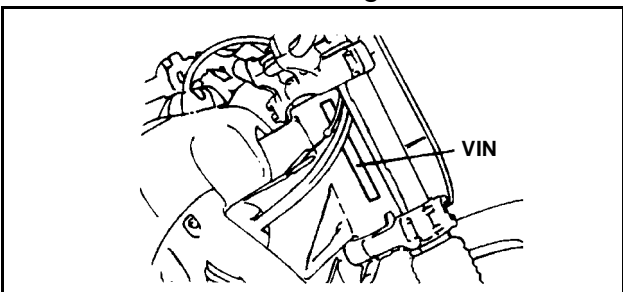
XR400R: '96 - '04

RIGHT side of the steering head.



CRF450R: '02 - '09

RIGHT side of the steering head.

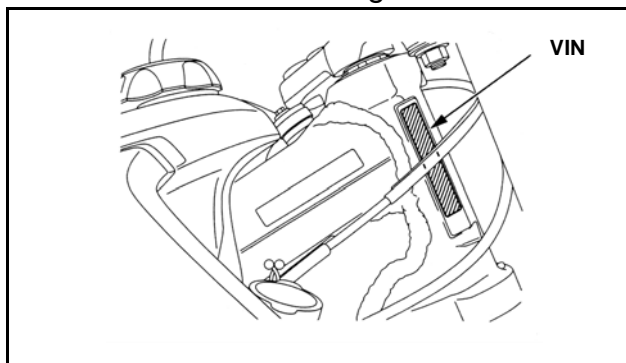


OFF
ROAD

Off-Road Motorcycles

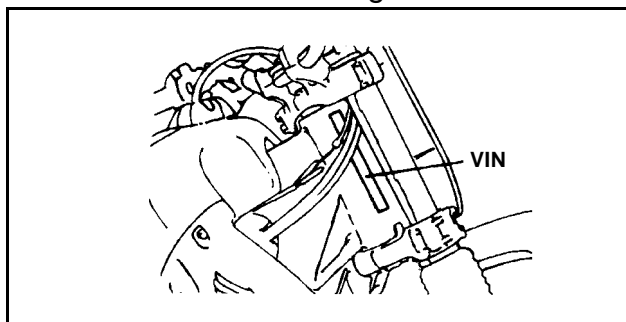
CRF450X: '05 - '09

RIGHT side of the steering head.



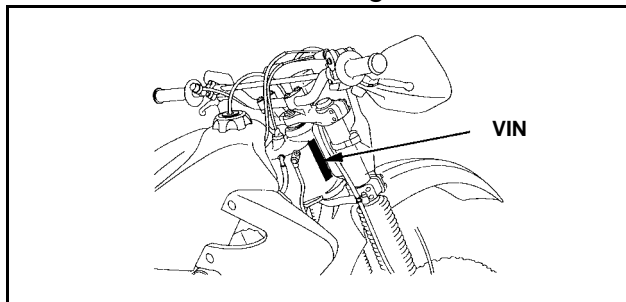
CR500R: '90 - '01

RIGHT side of the steering head.

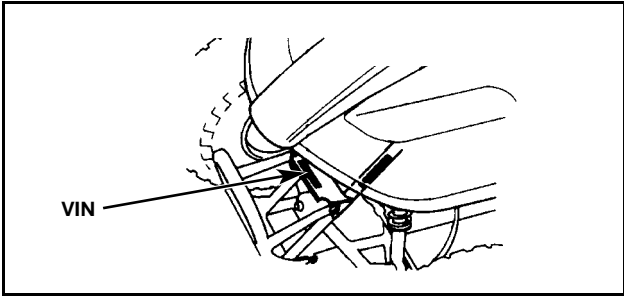


XR650R: '00 - '07

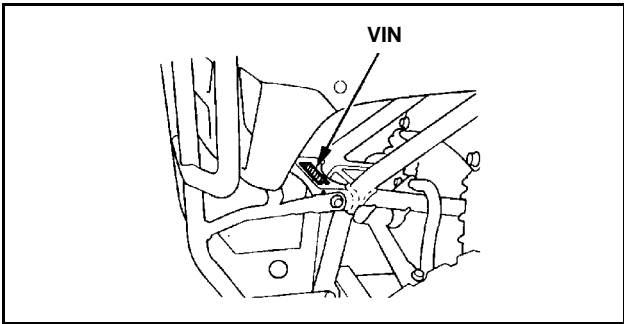
RIGHT side of the steering head.



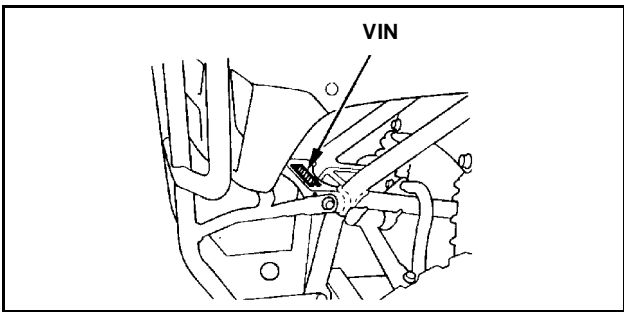
TRX90/EX: '93 - '08
TRX90X: '09
FRONT of the frame.



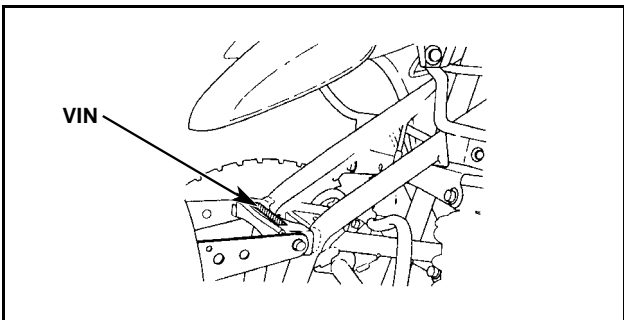
TRX250: '97 - '01
TRX250TM: '02 - '09
FRONT of the frame.



TRX250TE: '02 - '09
FRONT of the frame.



TRX250EX: '01 - '08
TRX250X: '09
FRONT of the frame.



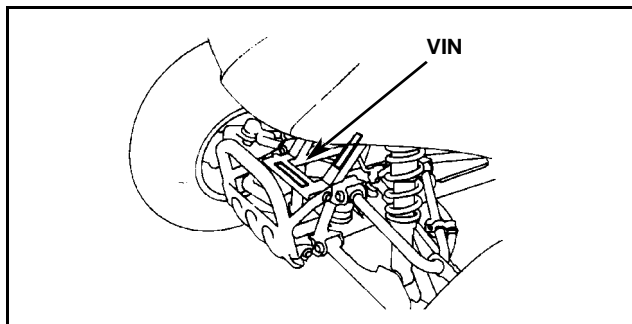
V.I.N. Location Guide

ATV

TRX300EX: '93 - '08

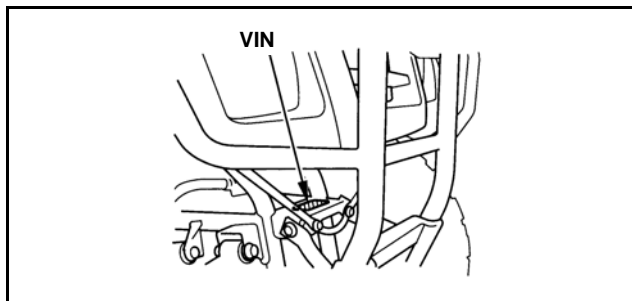
TRX300X: '09

FRONT of the frame.



TRX350FE/FM/TE/TM: '00 - '06

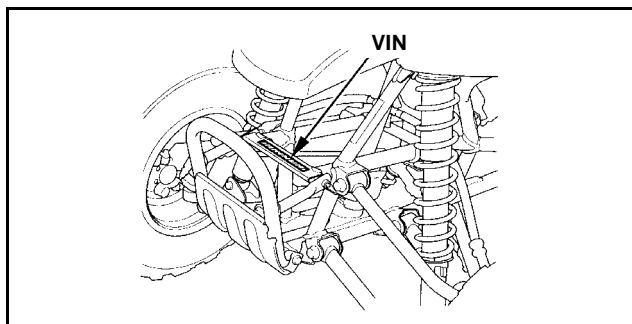
FRONT of the frame.



TRX400EX: '99 - '08

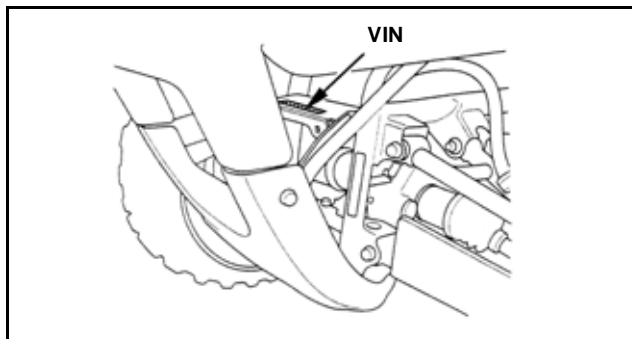
TRX400X: '09

FRONT of the frame.



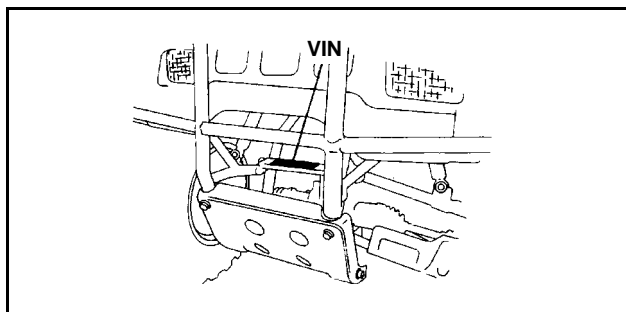
TRX400FA/FGA: '04 - '07

FRONT of the frame.



TRX400FW: '95 - '03

FRONT of the frame.



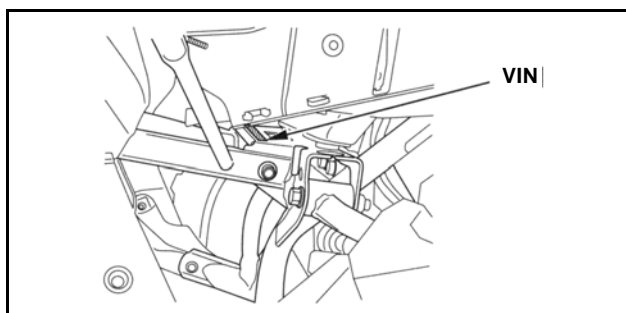
TRX420FA/FPA: '07 - '09

TRX420FE/FPE: '07 - '09

TRX420FM/FPM: '07 - '09

TRX420TE/TM: '07 - '09

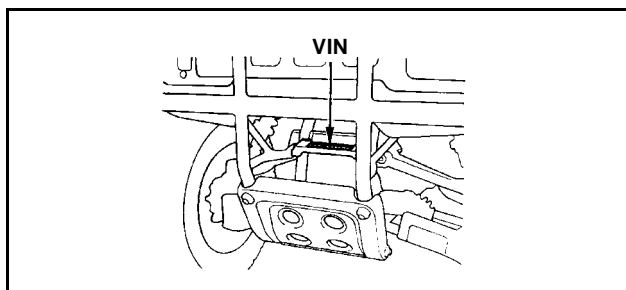
FRONT of the frame.



TRX450S/ES: '98 - '01

TRX450FE/FM: '02 - '04

FRONT of the frame.



V.I.N. Location Guide

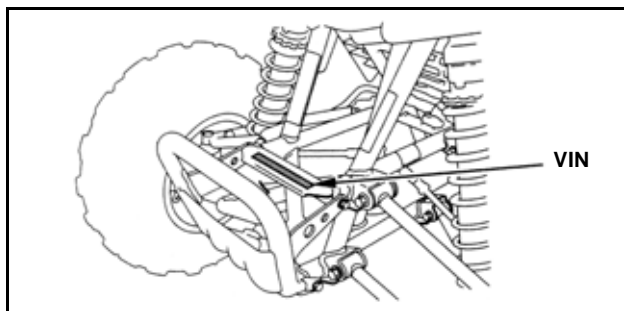
ATV

TRX450ER: '07 - '09

TRX450R: '04 - '07

TRX450R: '09

FRONT of the frame.

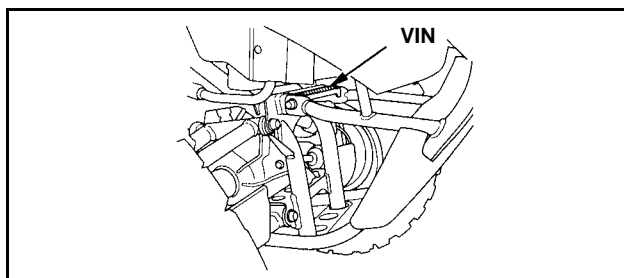


TRX500FA: '01 - '09

TRX500FGA: '06 - '09

TRX500FPA: '09

FRONT of the frame.

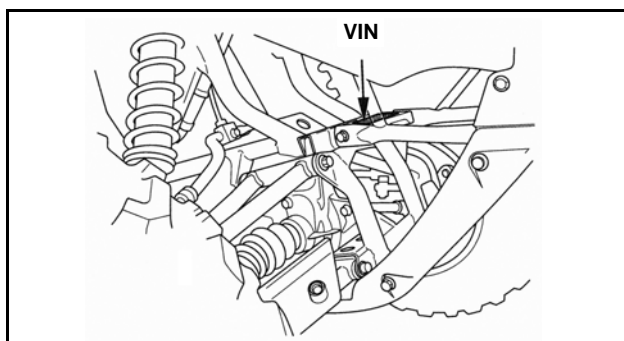


TRX500FE/FM/TM: '05 - '09

TRX500FPE: '07 - '09

TRX500FPM: '08 - '09

FRONT of the frame.

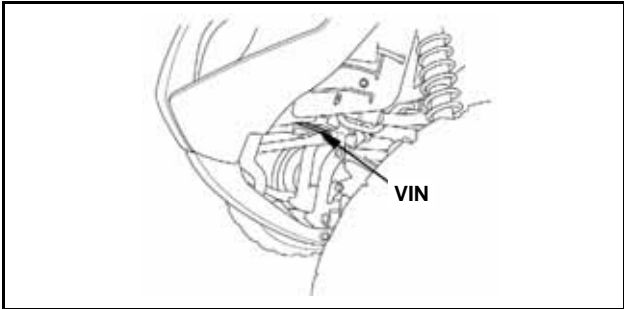


ATV

TRX650FA: '01 - '05

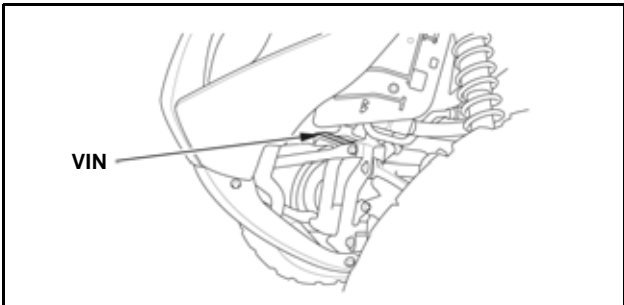
TRX650FGA: '05

FRONT of the frame.



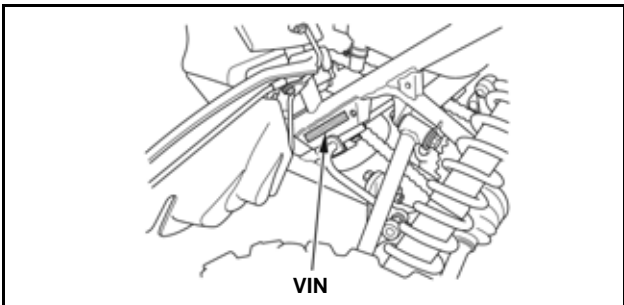
TRX680FA/FGA: '06 - '09

FRONT of the frame.



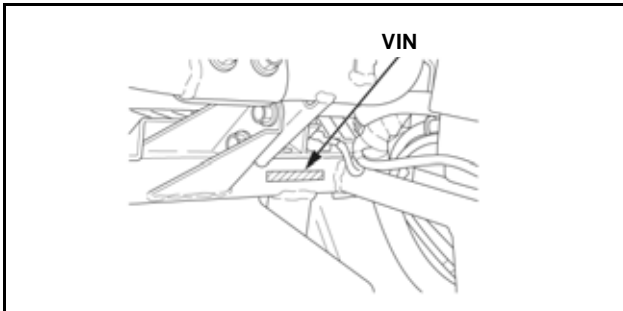
TRX700XX: '08 - '09

LEFT side of the frame behind footwell.



MUV700: '09

FRONT side of frame under front hood.



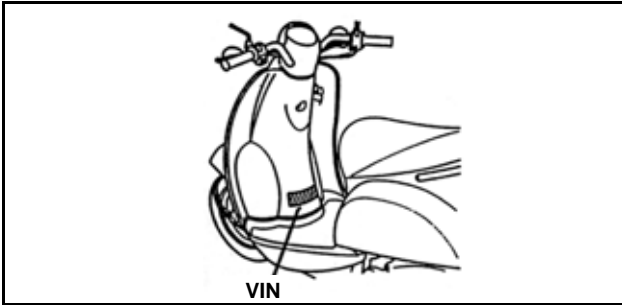
Scooter

CHF50/S Metropolitan: '02 - '09

CHF50P Metropolitan: '02 - '06

CHF50PS Metropolitan: '06

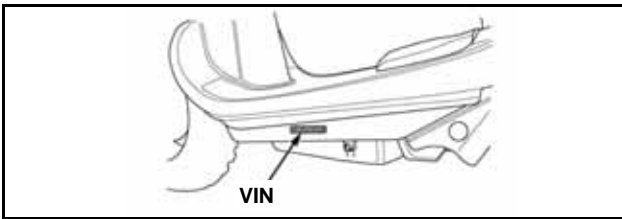
CENTERED inside the leg shield on Safety Certification Label.



NPS50 Ruckus: '03 - '09

NPS50S Ruckus: '06 - '09

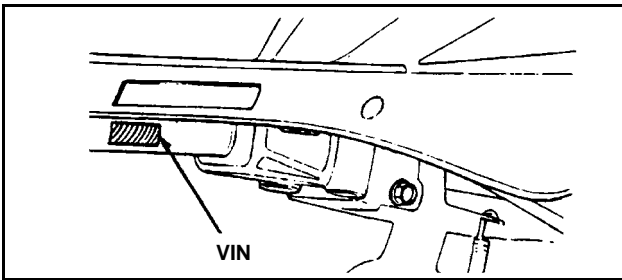
LEFT side of the frame on Safety Certification Label.



SA50 Elite 50 SR: '92 - '01

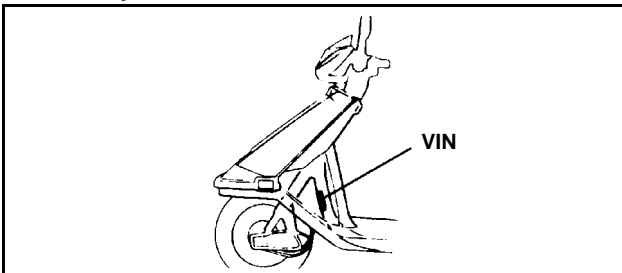
SA50P Elite S: '94 - '01

LEFT side of the frame on Safety Certification Label.



CH80 Elite: '88 - '07

CENTERED on the front frame down tube on Safety Certification Label.



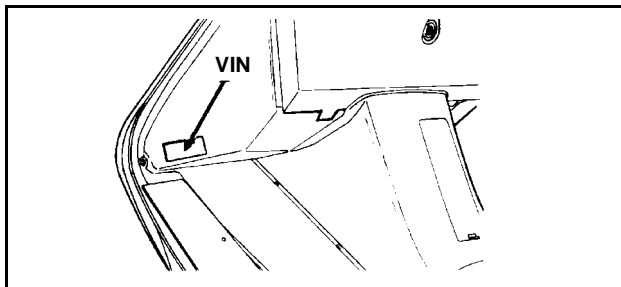
SCOOTER

V.I.N. Location Guide

Scooter

CN250 Helix: '92 - '01, '04 - '07

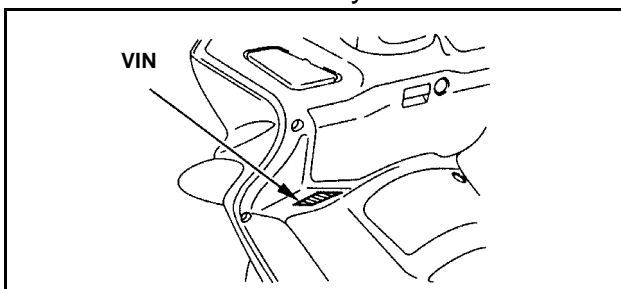
LEFT side of the inner fairing on Safety Certification Label.



NSS250/A Reflex: '01 - '07

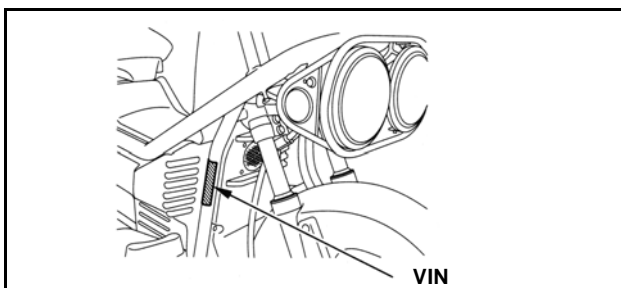
NSS250S/AS Reflex: '04 - '07

LEFT front cover on Safety Certification Label.



PS250: '05 - '06

RIGHT front frame on Safety Certification Label.

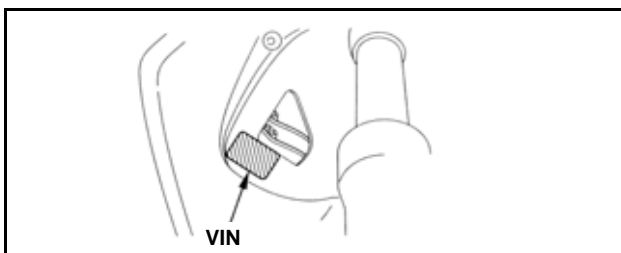


FSC600 Silver Wing: '02 - '05

FSC600 Silver Wing: '06 - '09

FSC600A Silver Wing: '04 - '09

UNDER the right front air cover on Safety Certification Label.



2001 - 2009 Color Label Locations

Models arranged by category (Street, Dual-Sport, Off-Road, ATV, MUV, and Scooter), and in order by engine displacement (from smallest to largest).

(CR and CRF-R/X models do not have color labels.)

MODEL	LOCATION
STREET	
CB250	on the right frame rail under the seat
CMX250C	on air cleaner housing cover behind left side cover
CB600F	on the frame under the seat
CBR600F4i	on the rear fender below the seat
CBR600RR	on the rear fender under the rear seat
VT600C/CD	on the frame below the seat
NSA700A	on the frame under the seat
CB750	on the left frame rail under the seat
VF750 C/C2/CD/DC	on the frame behind the left side cover
VFR800/A	on the frame under the seat
VFR800FI	on the rear fender under the seat
CB900F (919)	on the frame under the seat
CBR929RR	on the frame below the seat
CBR954RR	on the rear fender below the rear seat
CBR1000RR	on the rear fender under the rear seat
RVT100R (RC51)	on storage compartment under the rear seat
VTR1000F	on the frame below the seat
CBR1100XX	on the frame below the seat
ST1100/A/P	on the frame below the seat
VT1100 C/C2/C3	on the storage compartment behind right side cover
VT1100T	on the tool kit compartment behind right side cover
ST1300/A	on the frame below the front seat
VTX1300 C/R/S/T	on the frame behind the left side cover
GL1500 CD/CF	on the frame behind the left side cover
GL1800/A	inside the fuel filler compartment lid
NRX1800	on the rear fender under the seat
VTX1800 C/F/N/R/S/T	on the frame behind the left side cover
DUAL-SPORT	
CRF230L/M	on the frame behind the right side cover
XR650L	on the frame behind the left side cover
OFF-ROAD	
CRF50F	on the left side of the frame down tube
XR50R	on the left side of the frame down tube
CRF70F	on the frame behind the left side cover
XR70R	on the left side of the frame down tube
CRF80F	on the frame behind the left side cover
XR80R	on the frame behind the left side cover
CRF100F	on the frame behind the left side cover
XR100R	on the left frame tube above the air cleaner
CRF150F	on the frame behind the left side cover
XR200R	on the frame behind the left side cover
CRF230F	on the frame behind the left side cover
XR250R	on the frame behind the left side cover
XR400R	on the frame behind the left side cover
XR650R	on the frame behind the left side cover

2001 - 2009 Color Label Locations

MODEL	LOCATION
ATV	
TRX90/EX/X	on the frame under the seat
TRX250EX/X	on the frame under the seat
TRX250 TE/TM	on the frame under the seat
TRX300EX/X	on the frame under the seat
TRX350 FE/FM/ TE/TM	on the frame under the seat
TRX400EX	on the frame below the seat
TRX400EX/X '08 - '09	on the top, right-hand side of the frame
TRX400 FA/FGA/FW	on the frame under the seat
TRX420 FA/FPA/ FE/FPE/ FM/FPM/ TE/TM	on the frame under the seat
TRX450R/ER	on the front of the frame
TRX450S/ES	on the frame under the seat
TRX500 FA/FGA/FPA	on the front of the frame
TRX500 FE/FPE/ FM/FPM/TM	on the front of the frame
TRX650 FA/FGA	on the frame below the seat
TRX680 FA/FGA	on the frame below the seat
TRX700XX	on the left side of the frame behind the foot well
MUV	
MUV700	on the frame under the hood
SCOOTER	
CHF50/P	in the center compartment below the seat
NPS50/S	on the right side of the frame under the seat
SA50/P	in the center compartment below the seat
CH80	on the fuel tank under the seat
CN250	in the glove box
NSS250/ A/AS/S	in the center compartment
PS250	on the inner box under the inner box cover
FSC600/A	in the center compartment under the seat